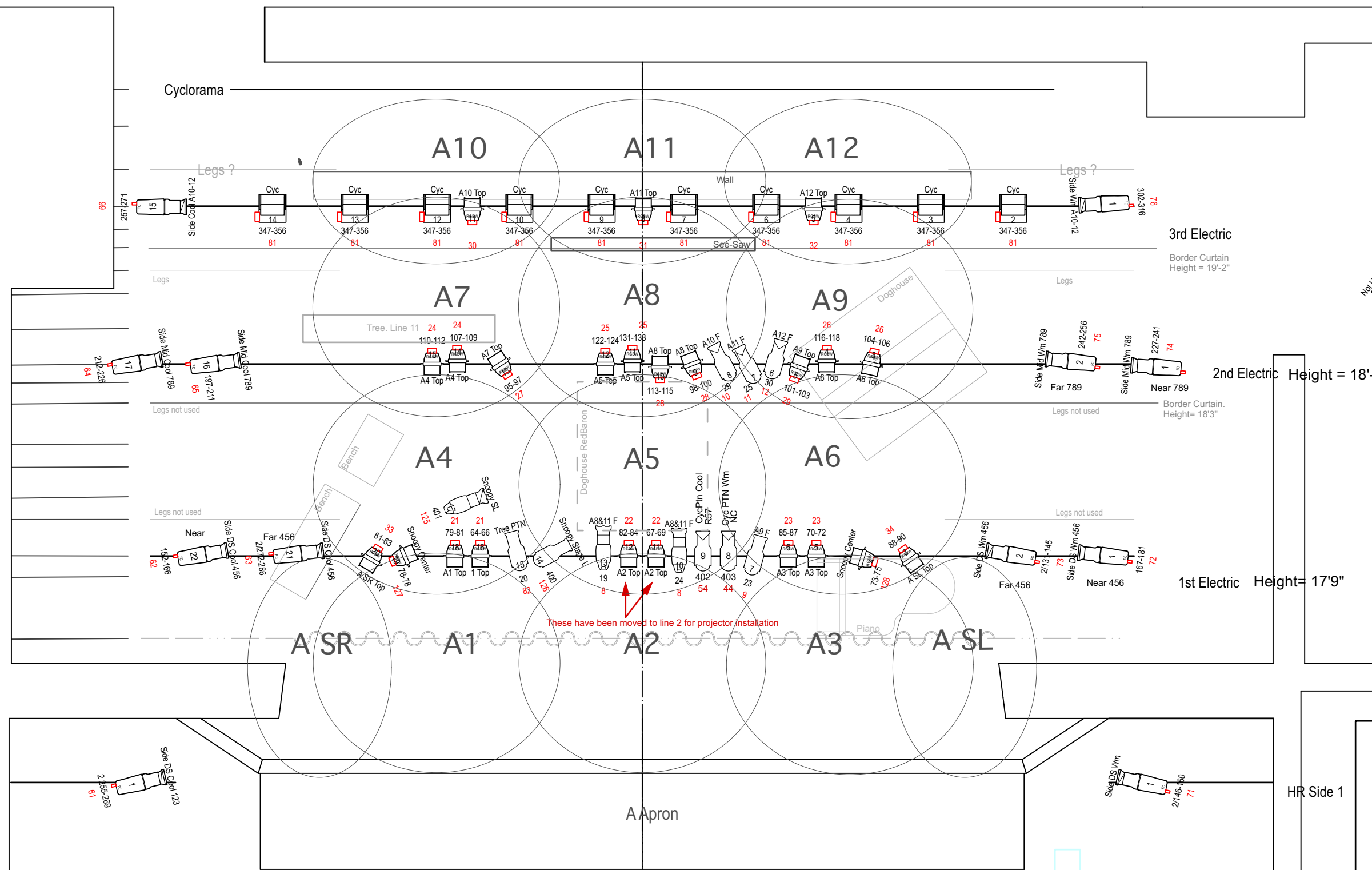


- 19 - 1 speed - **Cyc**
- 18 - variable-speed **Open**
- 17 - variable-speed - **Legs + Teaser**
- 16 - 1 speed - **3rd Electric**
- 15 - 1 speed **Open**
- 14 - variable-speed - storage
- 13 - variable-speed - **Legs**
- 12 - 1 speed - **Crossover Curtain**
- 11 - variable-speed **Open**
- 10 - 1 speed - **2nd Electric**
- 9 - (DISABLED 3/22) variable-speed **Open**
- 8 - variable-speed - **Legs**
- 7 - variable-speed **Open**
- 6 - variable-speed **Open**
- 5 - 1 speed - **Teaser**
- 4 - variable-speed - **Legs**
- 3 - 1 speed - **1st Electric**
- 2 - variable-speed **Open**
- 1 - variable-speed - **Act Curtain**



Label Legend

Color Purpose

Unit #

Circuit/Address Channel

HL Side 1

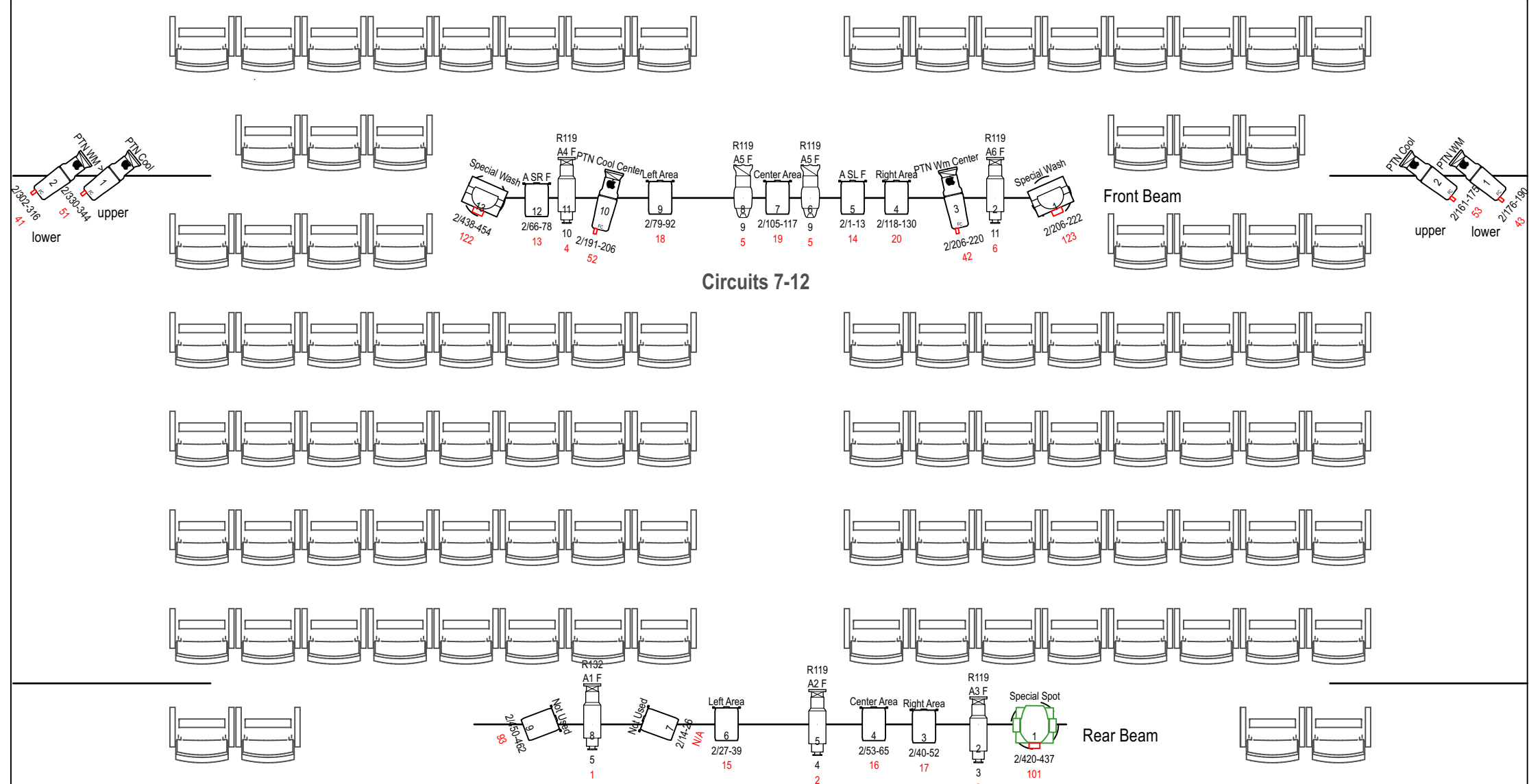
HR Side 1

HL Side 2

HR Side 2

HL Side 3

HR Side 3



Light		
	Altman 360Q 4.5 x 6	5
	Altman 360Q 6x9	3
	Altman Shakespeare 20deg	5
	Chauvet Ovation C-805FC	10
	Chauvet Ovation E-910 FC 26 Degree	12
	Chauvet Ovation E-910 FC 36 Degree	6
	Elation Fuze Par Z175	10
	ETC Source4 Jr 26deg	3
	ETC Source4 Jr 36deg	2
	Chauvet Ovation EVEP-130 RGB	25
	Light Instr Strand LekoLite 26deg	0
	Strand SL19	0
Moving Light		
	Chauvet Rogue R2 Spot	1
	Chauvet Rogue R2 Wash	2
Typical		

Production **You're A Good Man Charlie Brown**

Facility **AHA Theater**

Drawing Name **Light Plot**

Date: 10/20/22 Scale: 1/4" = 1'-0"

Drawn By: Brian Bjorklund

Revision/Version: 11/1/22

Drawing # **1**